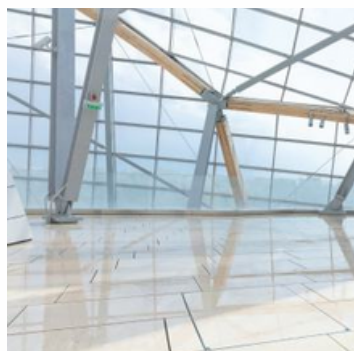


FLOOR ACCESS COVER IN STAINLESS STEEL

System MA-BS fire-rated EI90- filling, power-assisted opening



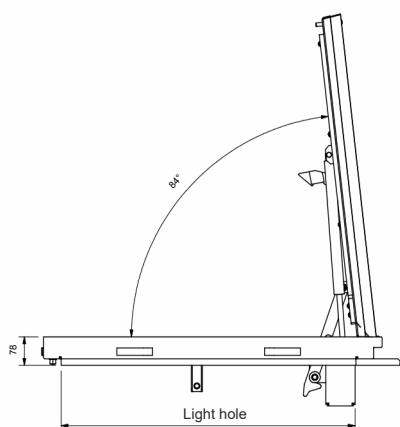
The floor access cover system MA-BS is made of 2.5 mm stainless steel. The tray depth is 50 mm and the installation height is only 75 mm. The frame is equipped with a circumferential, frost- and water-resistant special sealing joint, which is largely odor- and water-tight- the frame is set in concrete on grade.

Subsequently, the tray can be filled and inserted into the frame. The cover is fixed on the frame on 2 corner points. The opening is helped by the high-quality gas pressure springs in a way that the access cover can be opened and closed by one single person. Safety is guaranteed by a fall protection device. The tray can be filled with paving, tiles, concrete, artificial resin, granite, terrazzo tiles, wood and hard floor covering or other materials.



FIREPROOFING

The MA-BS fireproof floor access cover has a fireproofing plate, located at the rear of the tank, that provides fire protection through the access cover, for 90 minutes



ITEM	Overall frame size [ca. mm]	Light hole [ca. mm]	Empty weight [ca. kg]	M - S
MA-BS-600600E75	701 x 725	600 x 600	39 kg	S
MA-BS-800800E75	901 x 925	800 x 800	46 kg	S
MA-BS-10001000E75	1101 x 1125	1000 x 1000	66 kg	S

M Available in stock while supplies last

S Customized production

APPLICATION

For indoor and outdoor floor ducts.

APPLICATION FIELDS

For Floor Access covers that are opened frequently without having to make any special effort. Indicated for the maintenance of technical rooms such as those for swimming pools. The opening and closing of the compartment takes place without particular effort.

MATERIAL

Frame and tray made of 2,5 mm stainless steel.

INSTALLATION AND OPENING

The installation shall be implemented in a professional manner in accordance with our installation instructions. A lifting key and installation instructions are included with every FF floor access cover.

CUSTOMIZED SOLUTIONS

Customized production upon customer enquiry.

LOAD



PARTICULAR ADVANTAGES

- With frost- and weather-resistant special sealing joints
- With fixing anchors for safe support
- Almost invisible when installed
- Tray depth is 50 mm
- With additional reinforcement cross-braces
- Power-assisted and fall-preventing opening
- Quality own production



Watch
installation
video